

Injection Date : Thu, 26. Oct. 2023 Seq Line : 5  
Location : 14  
Inj. Vol. : 2 µl

Acq. Method : C:\Users\Public\Documents\ChemStation\1\Data\SE26OCT 2023-10-26  
13-10-30\22010446C LCMS-6#.M

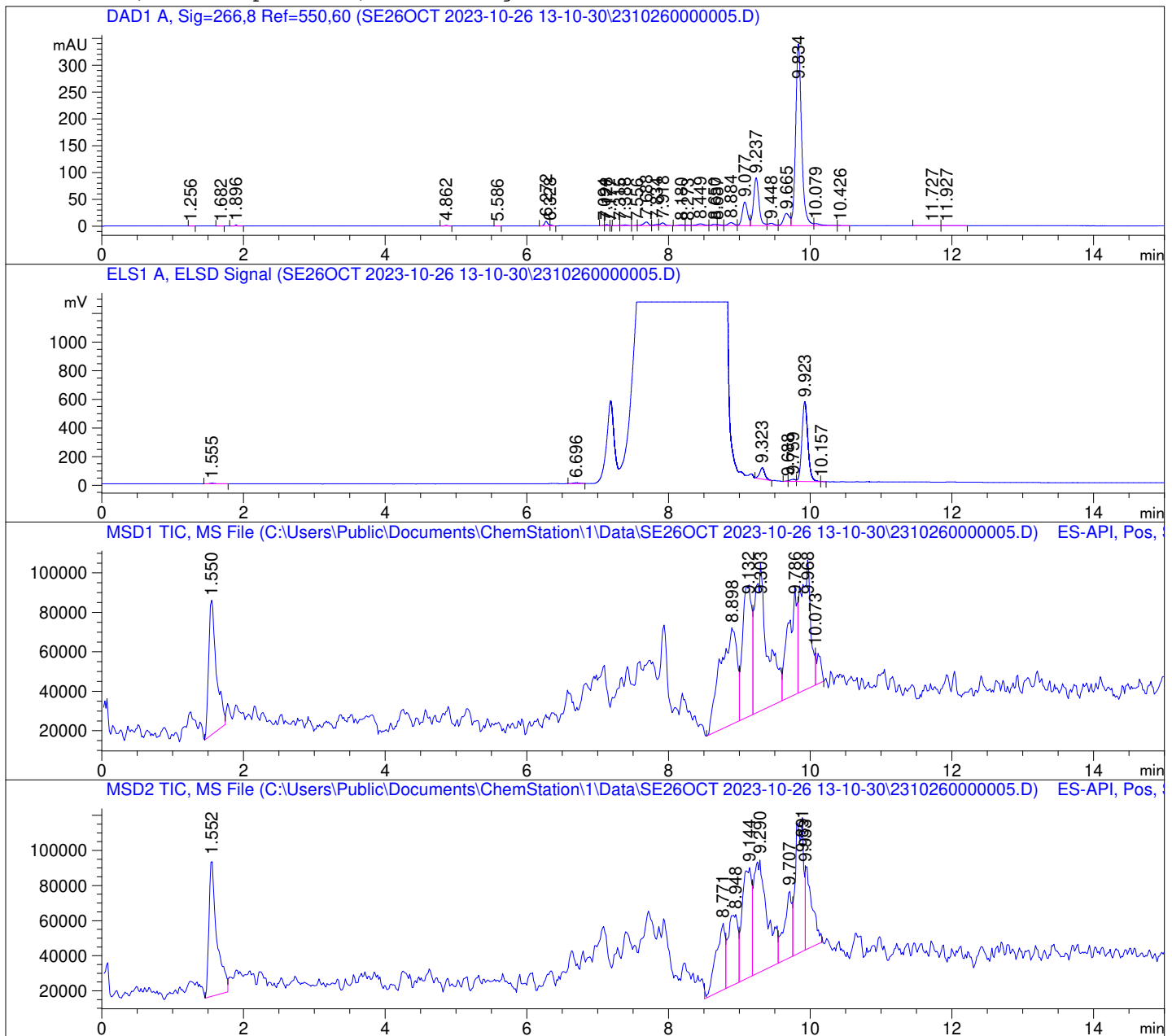
Analysis Method : C:\Users\Public\Documents\ChemStation\1\Data\SE26OCT 2023-10-26  
13-10-30\22010446C LCMS-6#.M (Sequence Method)

Waters XBridge BEH Amide (4.6 x 150 mm, 2.5 µm); PN# 186006726

Mobile Phase A: 20mM Ammonium Acetate (aq) pH 8.2

Mobile Phase B: AcN

Mobile Phase A / Mobile Phase B: 5/95 (0 min) --> (10 min) --> 60/40 (5 min); Flow:  
1.0 ml/min; MSD1 = positive; MSD2 = negative



DAD1 A, Sig=266,8 Ref=550,60

Peak #	Ret. Time [min]	Area [mV *s]	Area %
1	1.256	0.219	0.007
2	1.682	0.525	0.017
3	1.896	4.269	0.140
4	4.862	3.535	0.116
5	5.586	0.434	0.014
6	6.272	27.358	0.896
7	6.328	3.409	0.112
8	7.094	0.829	0.027
9	7.128	5.402	0.177
10	7.177	0.200	0.007
11	7.315	1.245	0.041
12	7.388	6.748	0.221
13	7.556	0.768	0.025
14	7.688	33.861	1.110
15	7.834	9.220	0.302
16	7.918	23.081	0.756
17	8.180	6.311	0.207
18	8.273	2.904	0.095
19	8.449	22.510	0.738
20	8.650	11.384	0.373
21	8.687	6.705	0.220
22	8.884	31.790	1.042
23	9.077	226.524	7.423
24	9.237	467.567	15.321
25	9.448	25.220	0.826
26	9.665	132.739	4.349
27	9.834	1970.287	64.560
28	10.079	23.776	0.779
29	10.426	0.248	0.008
30	11.727	1.487	0.049
31	11.927	1.300	0.043

ELS1 A, ELSD Signal

Peak #	Ret. Time [min]	Area [mV *s]	Area %
1	1.555	26.899	0.708
2	6.696	35.056	0.922
3	9.323	394.975	10.390
4	9.688	11.231	0.295
5	9.759	82.090	2.159
6	9.923	3245.457	85.371
7	10.157	5.872	0.154

